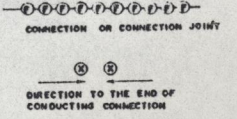


- #1. MIC INPUT # 5. S.G
- #2. CONST AUDIO # 6 UP DOWN CENTER
- #3. P.T.Y # 7 15VOLT UP
- #4. GROUND # 8 15.2 VOLT



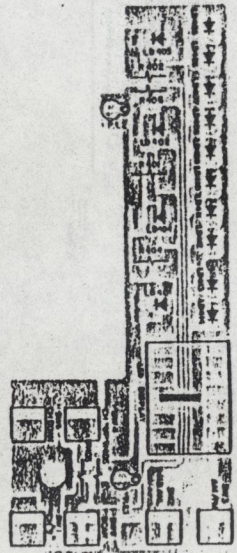
ALL RESISTORS IN OHM
ALL CONDS IN MICROFARAD
(M) = MYLAR (CH) = HPO
LT = TANTALUM

* FACTORY SELECTED VALUE NOTICE

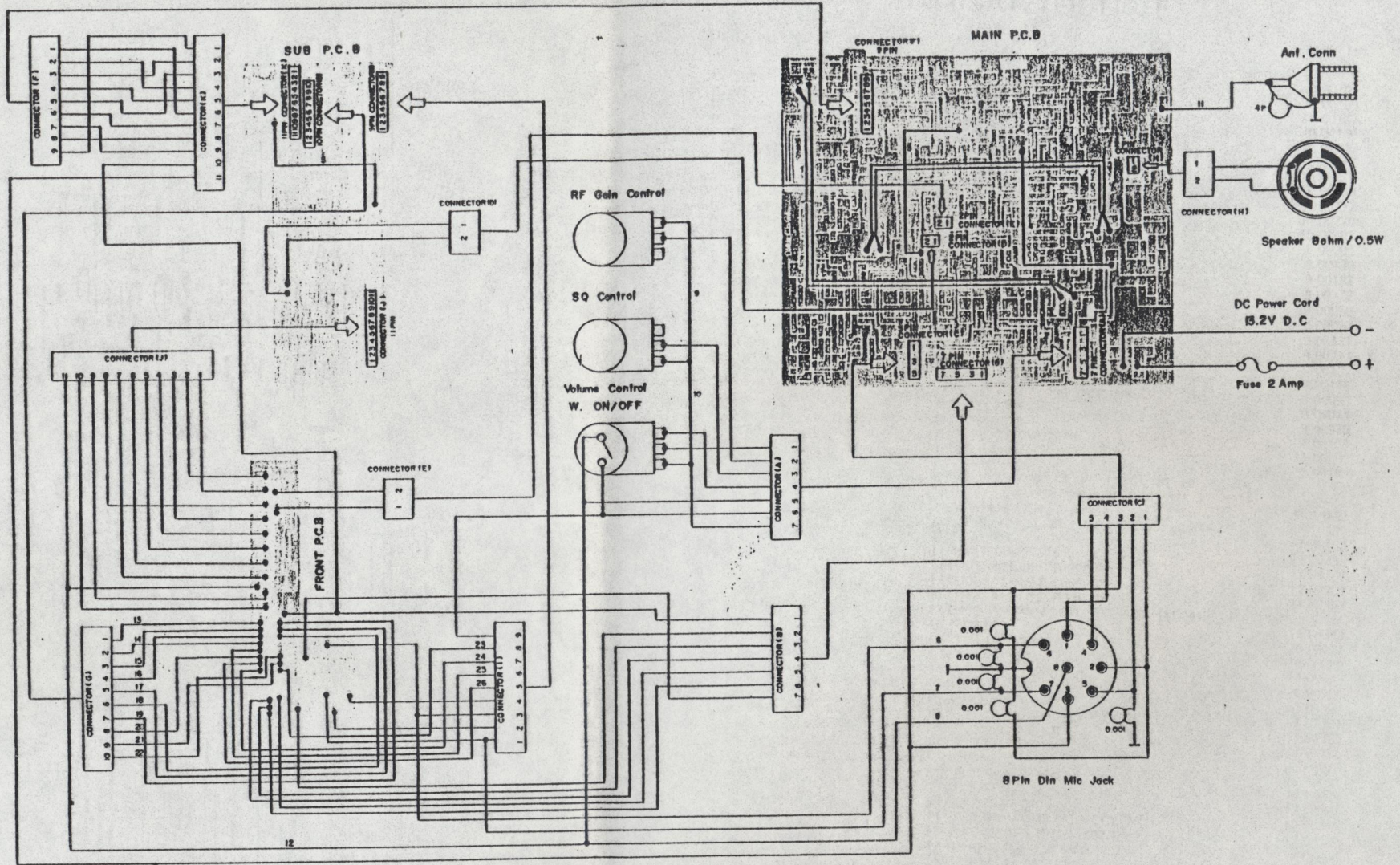
SCHALTUNG SCANNER 4012 AM/FM

Änderungen, die dem technischen Fortschritt dienen, vorbehalten.





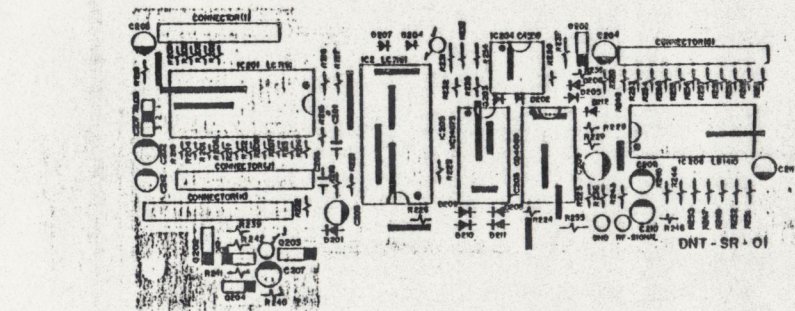
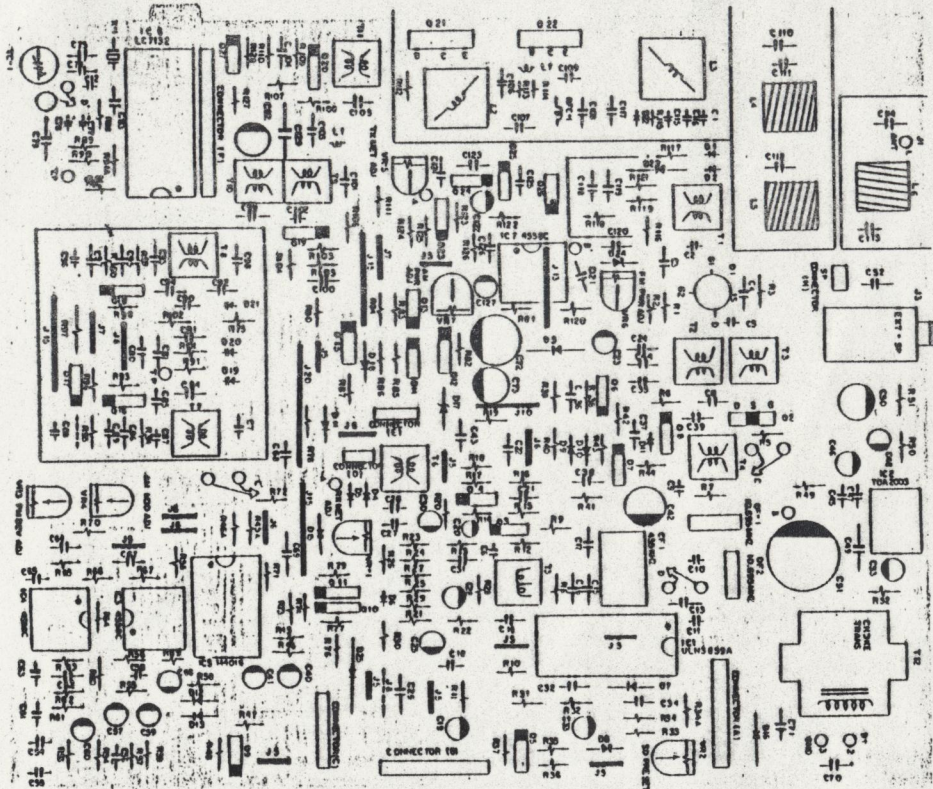
DNT-SR-02



PLATINEN UND VERDRÄHTUNGSPLAN



ERSATZTEIL-LISTE



PLATINEN UND BESTÜCKUNGSPLAN

TEILE NAME	BEZEICHNUNG	TEILE NR.
IC FM	IC 1 ULC 3859	10-00164
IC AF	IC 2 TDA 2003V	10-00109
IC OP AMP	IC 3, 4, 7, 204 UVC4558	10-00167
IC SW	IC 5 M4016BRS	10-00166
IC PLL	IC 6 LC7132	10-00145
IC DRIVER	IC 201 LC7191	10-00217
IC CH-CONTROL	IC 202 LC7181	10-00218
IC AM-CONTROL	IC 203 GD4069	10-00219
IC UP/DW/AM-CONTROL	IC 205 MC14073	10-00112
IC LEVEL/LED Driver	IC 208 LB1410	10-00220
IC DC REG	IC 207 78L08	10-00162
D.G. M.F. RF	Q1 BF964	9-00096
F.E.T.	Q2 2SK161	9-00130
Transistor RF	Q3, 4, 6, 19, 20 2SC3193	9-00123
Transistor RF	Q8, 16, 18 2SC3195	9-00122
Transistor AF	Q9, 10, 11, 17, 23, 25, 27 2SC3199	9-00050
Transistor AF	Q5, 7, 13, 15 2SA1267	9-00052
Transistor AF	Q26 KTA473	9-00131
Transistor AF	Q24 KTA966	9-00124
Transistor AF	Q12 KTC1815	9-00132
Transistor Switching	Q201 KTC2236	9-00115
Transistor Switching	Q202, 203, 204, 205, 2SC3199	9-00050
RF Driver	Q21 2SC2314	9-00074
RF PA	Q22 2SC2078	9-00075
Diode Varicap	D19, 20, 21 SVC251Y	11-00189
Diode Zener	D24 5.6 Volt	11-00280
Diode Zener	D17 8.2 Volt	11-00185
Diode Si	D1, 2, 5, 6, 7, 8, 11, 12, 13, 14, 15, 18, 25, 201, 202, 203, 204, 205, 206, 207, 208, 209, 210, 211, 212 1N4148	11-00182
Diode Ge	D3, 4, 9, 10, 22, 23 1N60	11-00183
Diode Rectifier	D16 1N5401	11-00188
LED Display	LD14 LTD482Y-YH	11-00359
LED LAMP	LED401, 404 ULP-R-658-01	11-00360
LED LAMP	LED402, 403 ULP-G-658-01	11-00361
LED LAMP	LED413, 414 ULP-R53B-01	11-00362
LED LAMP	LED405, 406, 407, 408, 409, 410, 411, 412 ULP-G53-01	11-00363
Crystal Filter	QF-1.2, 10.695 M8A	26-00027
Ceramic Filter	CF-1 CFW455G	18-00060
Trimmer Cond	TC-1 FR20PF (200B)	14-00023
Crystal	X-1 10.240 MHz	26-00026
Pre-Set-Resistor	RVT H0615C-10KB	1-01023
Pre-Set-Resistor	RV1, 2, 3, 4, 5, 201 H0615C-22KB	1-01191
Pre-Set-Resistor	RV6 H0615C-2.2 KB	1-01195
Volume Control	VR403 VM11AG40 10KA	1-01196
Sq. RF Control	VR401, 402 K161100A69 10KB	1-01019
Push Switch	SW1, 2, 3, 6 SPH221A	16-00057
Push Switch	SW4, 5 SPH222A	16-00059
EXT-SP Jack	JHHSJ0615-01-010	12-00082
Coil	T1, 7, 8 RX27MHz (A) VCO7FM06	12-00215
Coil	T2, 3 RX27MHz (B) 7FM07-1	12-00320
Coil	T4 RX10.695MHz 7FM08-1	12-00304
Coil	T5 RX455KHz 7AM10	12-00322
Coil	T6 RX455KHz HT105	12-00286
Coil	T9, 10 TX27MHz (A) LX17	12-00290
Coil	T11 TX27MHz (B) LX18	12-00305
Front Panel	CJF-029-48-8B	20-01679
Window	CJE-069-1	20-01680
Volume Knob	CJK-07-4-B	20-01681
Push Button	DBT-307-10	20-01587
Top Cabinet	CPU-011-8	21-01536
Bottom Cover	CPU-012-8	21-01537